



90 Sandyleaze, Longlevens, Gloucester, GL2 0PX

£257,500

Ref: LG24669

A GOOD SIZED SEMI DETACHED FAMILY HOUSE WITH LOVELY GARDENS BACKING ONTO PLAYING FIELDS

Sandyleaze is a popular residential road, situated off the Elmbridge Road and Cheltenham Road, approximately 1 1/2 mile to the East of Gloucester city centre. Good local shopping is close by, some of the schools are within walking distance and access to Cheltenham and the M5 is only a short drive .



COVERED PORCH

Upvc double glazed front door to:-

ENTRANCE HALL

Radiator. Double radiator. Laminate flooring. Staircase to landing. Understairs storage.

KITCHEN 11' 1" x 10' 6" (3.38m x 3.20m)

Inset single drainer stainless steel sink unit set into worktops with cupboards and drawers below. Wall units. Built in double oven and electric hob with extractor hood. Plumbing for washing machine and dishwasher. Large window to the front. Space for fridge/freezer. Door to side lobby and door to:-

DINING ROOM 10' 0" x 9' 0" (3.05m x 2.74m)

Double radiator. Double doors to:-

SITTING ROOM 13' 4" x 12' 3" (4.06m x 3.73m)

Laminate flooring. Brick fireplace with coal effect gas fire. Coved ceilings. Double glazed French doors to terrace and garden.

SIDE LOBBY

Doors to both front and rear.

CLOAKROOM

Low level W.C.

OFFICE/WORKSHOP 15' 2" x 6' 9" (4.62m x 2.06m)

Window to the rear. Upvc double glazed door to the rear.

LANDING

Access to loft. Airing cupboard with Worcester gas fired central heating boiler.

BEDROOM 1 11' 6" x 10' 7" (3.50m x 3.22m)

Radiator. Wardrobe cupboard. Views over playing fields.

BEDROOM 2 12' 6" x 9' 7" (3.81m x 2.92m)

Wardrobe cupboard. Radiator. Views over playing fields.

BEDROOM 3 7' 0" x 8' 0" (2.13m x 2.44m)

Radiator. Wardrobe cupboard.

BATHROOM

White suite of panelled bath with Electric Mira shower. Pedestal wash hand basin. Low level WC. Fully tiled walls. Vertical heated towel rail/radiator.

EXTERIOR

Front gardens, driveway with parking for two cars. Gravel with path to front door. Door to side lobby.

Rear gardens are South Easterly backing and of a good size with full width terrace. Lawns with fencing to 2 sides and hedging to the third. Raised area of decking and lovely tree. Timber garden store.

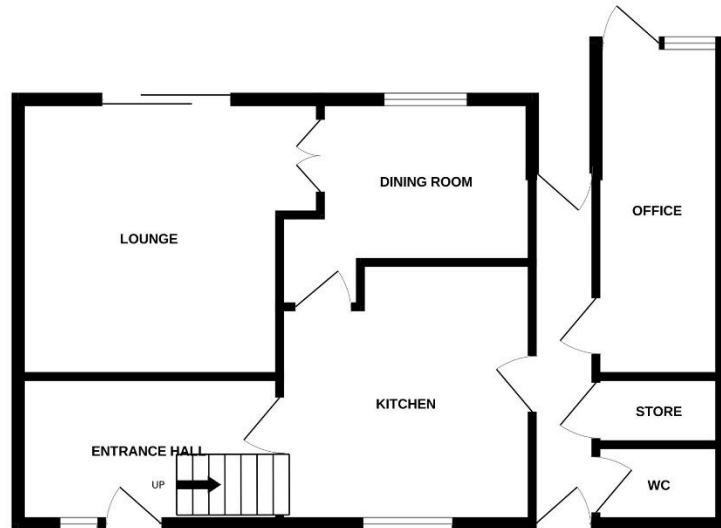
AGENTS NOTE

COUNCIL TAX: B

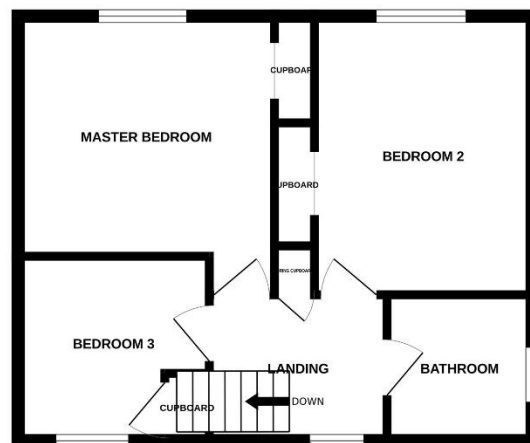
EPC: D-60



GROUND FLOOR



1ST FLOOR



Whilst every attempt has been made to ensure the accuracy of the floorplan contained here, measurements of doors, windows, rooms and any other items are approximate and no responsibility is taken for any error, omission or mis-statement. This plan is for illustrative purposes only and should be used as such by any prospective purchaser. The services, systems and appliances shown have not been tested and no guarantee as to their operability or efficiency can be given.
Made with Metropix ©2023

We wish to inform you that these particulars are set out as a general outline and do not constitute any part of an offer or contract. We have not tested any services, appliance or equipment and no warranty is given or implied that these are in working order. Fixtures, fittings and furnishings are not included unless specifically described. All measurements, distances and areas are approximate and for guidance only. It should not be assumed that the property remains the same as shown in the photographs.

Farr & Farr Longlevens Tel: 01452 380444 Email: longlevens@farrandfarr.co.uk